

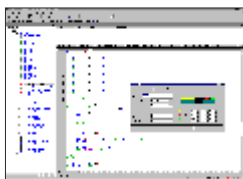
Building Management

# MICROMATIC BM



# the Modular Building Management System

## Key features



### IEC 61131-3 programming

- integrated development environment
- comprises e editor, compiler and online monitor
- bit, word, integer, long integer and floating point data types



### Large memory

- 512K flash + 4Kb permanent EEPROM

### Fast 16-bit processing

- 250ns basic instruction

### Network performance

- High-level network: Ethernet + TCP/IP
- Low-level network: CAN-BUS
- Fast transmission 100 kbps

### Operator panel with IR-receiver + temperature sensor

- Simple configuration tool (template editor with menu functions)



### Connection to control system

- Driver for IMPERIO-Control System Software
- OPC driver available



### Freely programmable serial interface

- Functions for sending and receiving of strings
- Connection to printers, sensors, scales, modems, GSM devices



### High-speed counter

- 4-fold evaluation
- Protection against glitches

### Real-time clock



## Range of application

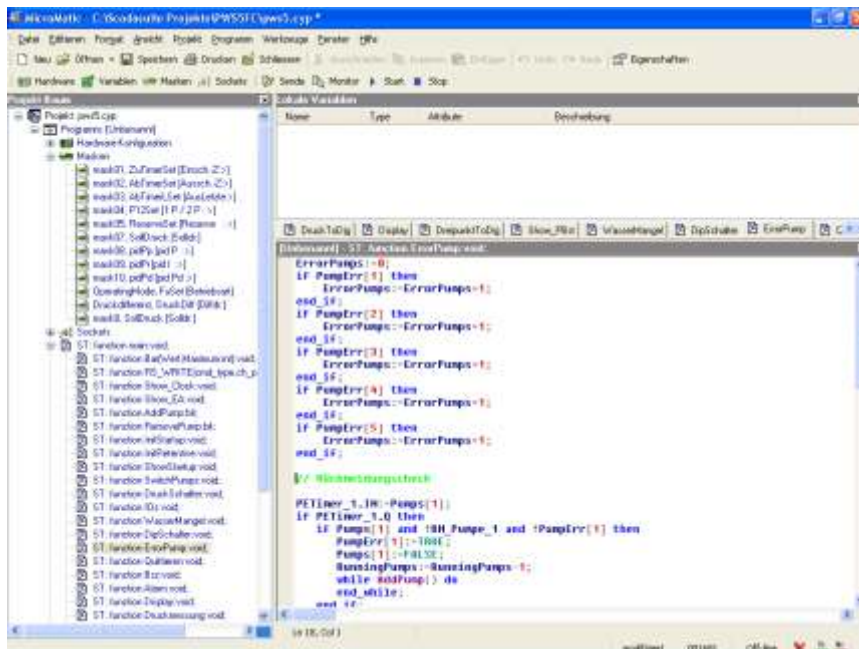


Typical fields of application:

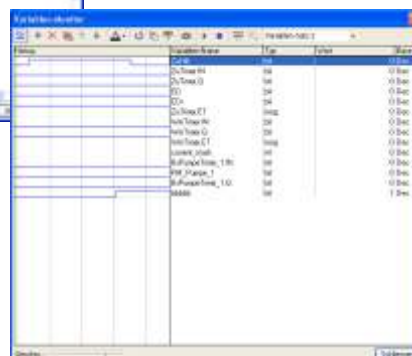
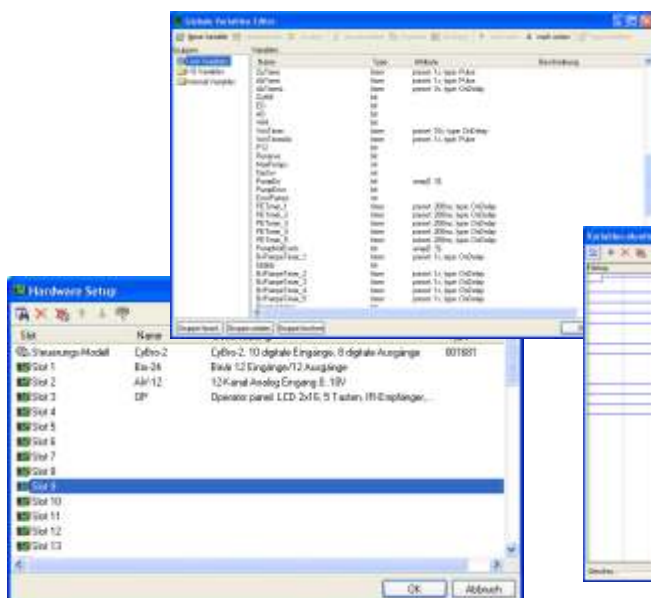
- Classic building automation
  - Domestic architecture
  - Nursing- and retirement homes
  - Hospitals
  - Home Automation
  - Prefabricated houses
- Food store chains
- Shopping centers
- Fashion Outlets
- Super markets
- Professional caterers
- Restaurant and food chains
- Boarding houses
- Hotels, hotel chains
- Clothes shops
- Banks and savings banks
- Building centers
- Gas stations
- Automobile industry
- Car dealers
- Chains of opticians
- Refrigerated warehouse chains
- Furniture stores and chains
- other chain stores
- Production plants
- Industrial and commercial building
- Power industry
- Hydro power stations and wind mills
- pumping station controllers (with remote station)
- Railways
- and many more ...



# Programming



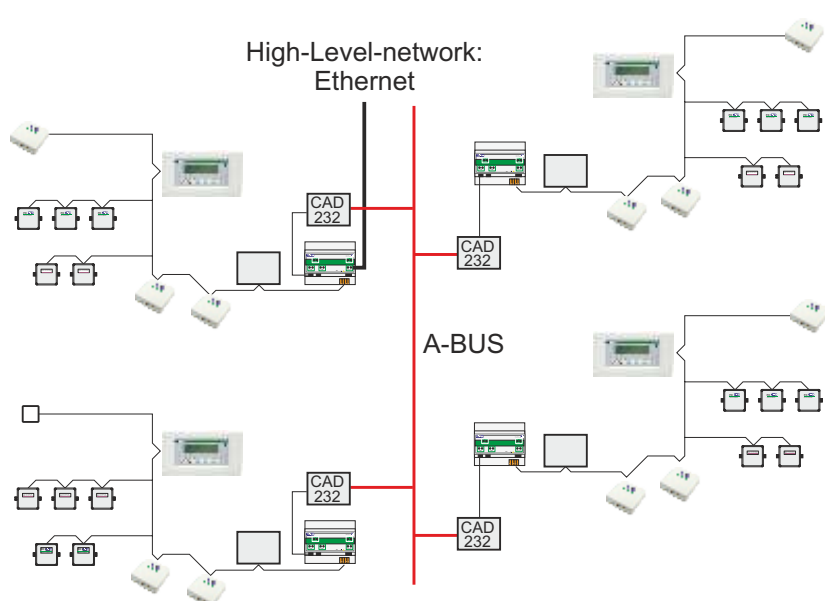
- IEC 6113
- IEC 61131-3 programming
- integrated editor, compiler and
- Online-monitor
- Graphic display of trends with monitor variables
- Syntax colouring
- Template generator for operator panel
- Simple network configuration
- interactive declaration of variables
- Project tree for simple project management
- Code helper for direct access on functions and variables
- predefined system variables
- Source code is stored in the PLC
- Adjustable CPU load for PLC function and communication
- Programming via networks possible





# Connectability

## System structure

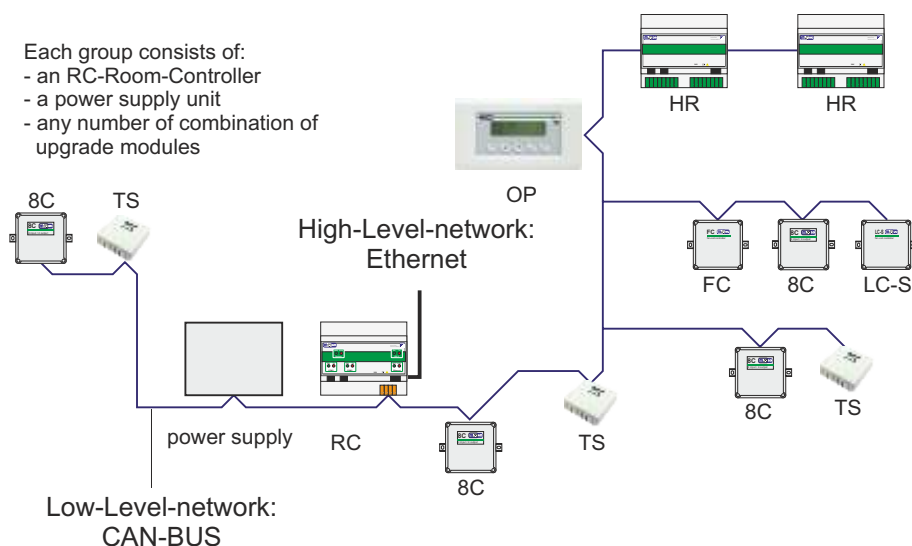


### Technical characteristics: A-BUS

Bus length: 1000 m max.  
Number of groups: 32 max.  
Baud rate: 19200 bps

For the connection of the groups via A-BUS  
A RS232/485 converter for each group is required.

Each group consists of:  
- an RC-Room-Controller  
- a power supply unit  
- any number of combination of  
upgrade modules




### Technical characteristics: CAN-BUS

Bus length: 100m max.  
Number of nodes: 64 max.  
Baud rate: 100 kbps max.  
Power supply: 24V DC

# Basic components

## Room Controller

The room controller is the heart of a MicroMatic BM system. It controls and operates all connected periferal devices.

<p>RC-A - Room-Controller with A-Bus RC-E - Room-Controller with Ethernet</p>  <p>RS232 A-Bus</p> <p>Low-Level-Netzwerk CAN-BUS....200m</p> <p>High-Level-Netzwerk A-BUS Ethernet</p> <p>IEX Port</p>	<p>COM1 - RJ-11, programming / networking</p> <p>COM2 - RJ-11, freely programmable RS232 interface</p> <p>Ethernet - RJ-45, UTP, 10M, programming / networking</p> <p>Power supply: 24V (18..26V) Current input: 50mA</p> <p>Compatible with MicroMatic 2</p>
--	---

## Available extensions







### Software










- IEC 61131-3 programming software
- OPC Server
- communication library for Visual Basic, C, Delphi etc.

### Accessories



OP-2 OP-BM		2x16 digit LCD display, IR-receiver, temperature sensor and buzzer.
OP-4		2x20 digit LCD display, IR-receiver, temperature sensor, humidity sensor, dimmer input, push- and rotation knob for input
IR - RC		infrared remote control, Switching, controlling, dimming
MS - Multisensor		IR-receiver, photometer and motion detector
ES - External Sensor		ES-W External temperature sensor (wall mounted)
TS- Temperature-Sensor		Temperature sensor with connection of an external sensor.

### IEX upgrade module

HR - Hotel-Room-Controller		HR Module for hotel rooms or similar applications Controls heating, air condition, lighting, fire alarm and emergency button.
LC-S (Standard)		For analogue controlled loads, Inputs for potentiometer, photo sensor, motion detector and switches.
LC-D (DSI/DALI)		For digital electrically controlled loads. Inputs for potentiometer, photo sensor, motion detector and switches.
FC - Climate-Controller		3 fan speeds, 2 control valve outputs, 2 temperature sensors, 1 external input window contact
8C - Universal 4in / 4out		Universal I/O module with 4 relay outputs and 4 potential-free inputs.
SW-W2 - Switch Module		4 potential-free inputs with open cable ends, 4 LED outputs, for mounting behind wall mounted buttons and switches
O2 - Output Module		2 relays outputs with max. 12 A for direct connection of lamps, blinds, etc. for mounting in wall outlets



Certified according to EN ISO 9001: 2008



# technologies for excellence

- IMPERIO - Process Control Technology
- MES - Manufacturing Execution System
- BAS - Building Automation System
- GCS - Galvanic Control System
- CWS - Cable and Wire System
- WSS - Water Supply System
- WWS - Waste Water Systems
- ABACS - Automatic Bath Analysis and Control System
- Comatic - Industrial-PLC
- MicroMatic - Compact-PLC
- Control Cabinet Construction



## CPA Building & Factory Technologies GmbH Control Division

**Austria**  
8055 Graz  
Lagergasse 322  
Tel.: +43 / 316 / 4670-0  
Fax: +43 / 316 / 4670-7

**PR. China**  
CPA Science & Technology Co., Ltd.  
888 Changjiang North Road  
Bacheng Town,  
Kunshan Euroamerican Industrial Park

Kunshan City, Jiangsu Province  
Tel.: +86/512/57689566  
Fax: +86/512/57689500

Homepage: [www.cpa.at](http://www.cpa.at) Email: [office@cpa.at](mailto:office@cpa.at)